

Lau, Horton & Wise LLP

in Association with CMS Hasche Sigle, Hong Kong LLP

劉賀韋律師事務所有限法律責任合夥

與 CMS 德和信律師事務所聯盟

CMS

law·tax·future

CMS Hong Kong

CMS Hong Kong – join us

As the Managing Partner, I am delighted to introduce you to CMS in Hong Kong and the APAC region. We are very much in “growth mode” in Hong Kong and have expanded significantly in recent years, with plans to grow further. Currently, we serve clients across all areas of Commercial/IP, Corporate/Funds, Finance and Dispute Resolution within eight industry sectors including Consumer Products, Energy & Climate Change, Financial Services, Infrastructure & Project Finance, Insurance, Life Sciences & Healthcare, Shipping, and Technology, Media & Communications (TMC).

Our unique offering in Hong Kong enables us to provide both local and international legal advice, from both common law and civil law perspectives, across the Asia-Pacific region and beyond. Many of our partners and teams are leaders in their fields, presenting you with the opportunity to work with first class, commercially-minded lawyers, and to support global players in the industry on their most strategic and complex transactions and cases.

From day one, you will be given the tools, resources and technology that you would expect at a future facing firm. We have invested heavily in technology to provide you with an agile working environment to help achieve a sustainable balance between work and home. We are also committed to your professional and personal development and provide extensive training courses, available in multiple formats, to help you thrive and progress along your chosen career path.

We have a strong D&I ethos, which is seen throughout CMS. Furthermore, we are passionate about giving back to the local community and actively encourage you to participate in local community initiatives – in fact, it is our trainees and junior fee-earners who brainstorm, execute and coordinate our CSR initiatives. For example, we participate in the Hong Kong Legal Walk and have organised team events at both the Crossroads Foundation and Food Angel organisations over the years. When it comes to sustainability initiatives, we work with a local bee farm where we have a sponsored bee hive. This has certainly created a buzz in the office!

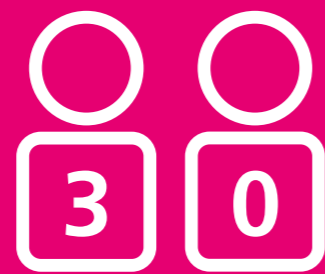


Steven Wise
Managing Partner,
Hong Kong Office

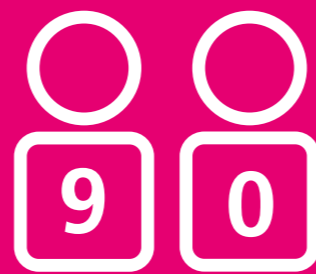
CMS Asia-Pacific at a glance



Offices in the region:
Beijing, Brisbane, Hong Kong,
Shanghai and Singapore



Number of partners



Number of lawyers



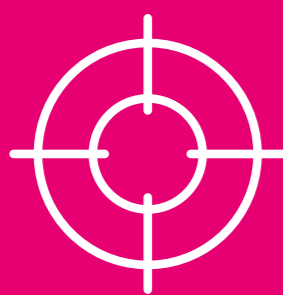
Nine nationalities speaking
over 10 languages fluently



Full service across the region



Local and international law
capability via local collaborations



Sector focused – automotive,
energy, financial institutions,
infrastructure, life sciences,
manufacturing, real estate,
shipping, and technology,
media and communications



Civil law and
common law advice



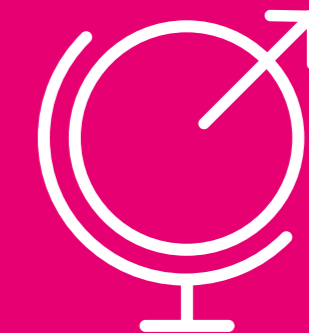
Ranked in Asian Legal Business'
(ALB) 'Top 50 Largest law Firms
in Asia' and 'Top 30 Largest
Firms in China'



Award winning – FT Innovative
Law Awards, ALB Employer of
Choice, SE Asia Law Awards



Advising international businesses
operating and investing in Asia



Advising Asian businesses on
local and international issues

Our locations

The Americas

Bogotá
Cúcuta
Lima
Mexico City
Rio de Janeiro
Santiago de Chile
São Paulo

Europe

Aberdeen	Duesseldorf	London	Rome
Amsterdam	Edinburgh	Luxembourg	Sarajevo
Antwerp	Frankfurt	Lyon	Sheffield
Barcelona	Funchal	Madrid	Skopje
Belgrade	Geneva	Manchester	Sofia
Bergen	Glasgow	Milan	Stavanger
Berlin	Gothenburg	Monaco	Stockholm
Bratislava	Hamburg	Munich	Strasbourg
Bristol	Istanbul	Oslo	Stuttgart
Brussels	Kyiv	Paris	Tirana
Bucharest	Leipzig	Podgorica	Vienna
Budapest	Lisbon	Poznan	Warsaw
Cologne	Liverpool	Prague	Zagreb
Dublin	Ljubljana	Reading	Zurich

Africa

Casablanca
Johannesburg
Luanda
Maputo
Mombasa
Nairobi

Middle East

Abu Dhabi
Dubai
Muscat
Riyadh
Tel Aviv

Asia-Pacific

Beijing
Brisbane
Hong Kong
Shanghai
Singapore

Message from Charles Currier, Senior Partner



Charles Currier
The Senior Partner

We have faced some transforming challenges to our world in recent times – for our personal lives and for both the business and political world. We are shocked and saddened by the humanitarian crisis at the heart of the conflict in Ukraine as well as inspired by the bravery and resilience shown by people.

Most of us have a new perspective on what matters and what is important. We have entered a new world, and this new world is different. Parts of the old world may return but many parts will not and of course, perspectives will be forever changed.

We need to be agile, we need to adapt and respond, **ready for a very changed world**. There are many perspectives, the issues of Climate Change, sustainability and a greener world will affect everything we do.

We are a Future Facing law firm, Bold, Dynamic, Agile and committed to Excellence. An important part of our strategy is to inspire, impact and support our clients, our people and our communities. We are supporting Ukraine and neighbouring countries through pro bono work and joining the international community in fundraising efforts to help alleviate the suffering caused by this conflict.

We bring together all our community work through our Social Impact programme. Our ambition is for the firm to be a **leader in social purpose**. The aim of our Social Impact programme is to ensure that collectively and individually, we are able to make a positive difference in the communities we live and work in, both **locally and globally**. Underpinning our Social Impact programme is the firm's commitment to responsible business and the UN Global Goals and we will focus on the areas where we can have the most impact: Peace, Justice, Strong Institutions and the Rule of Law (Goal 16), Climate Action (Goal 13), Reducing Inequalities (Goal 10) and Quality Education (Goal 4).





Stories from our people: **Simon Barrell**



This is a young and dynamic team with interesting clients and a wide range of high-profile work...

"I joined the Banking and Finance Team in the Hong Kong office in December 2021.

This is a young and dynamic team with interesting clients and a wide range of high-profile work, including transactions winning 'Deal of the Year' awards. The team is expanding rapidly and growing its reputation in the market. It also 'punches above its weight' and works on transactions with major banks and corporates.

It is great to have the support of the firm's international network. In view of the international nature of most of our transactions, we regularly work with our international colleagues across different time zones.

I very much appreciate the support of our Banking Knowledge Team in the UK when one is looking for precedents and know-how on particular topics.

Everyone in the Hong Kong office is very friendly and down to earth. Outside of work, there are lots of social activities (such as film nights) and CSR events (such as helping local charities). A recent event that I particularly enjoyed was an evening barbecue at Aberdeen Boat Club on Middle Island. We also have our own dragon boat team (called 'Firequackers'), which trained at weekends to compete in the International Dragon Boat Championships in Stanley (one of the biggest dragon boat racing events of the year in Hong Kong)."



Simon Barrell
Of Counsel
Finance
CMS Hong Kong

Stories from our people:

Jessica Cheung



The firm is not just about work. It also places huge emphasis on our professional development.

"I joined CMS as a paralegal in 2019. In the same year, I started my 2-year training contract with the firm and qualified with the dispute resolution team in 2022.

From the very beginning of my training, I had the opportunity to assist with sizable claims and deals under the supervision of qualified practitioners. The hands-on approach allowed me to develop a solid understanding of the practical aspects of the profession while learning from experienced colleagues.

Having qualified as a solicitor now, the learning curve remains steep, and I continue to learn from my work and colleagues every day. The supportive culture at CMS has made it a wonderful place to work, as everyone – from support staff to my peers to the partners – is

approachable and consistently offers constructive feedback on my work.

The firm is not just about work. It also places huge emphasis on our professional development. For instance, the London office regularly organises training workshops and we, the disputes team in Hong Kong, are taking turns to organise internal CPD talks every month so that we are keeping abreast of the latest legal development in our practice area. Outside the workplace, we are encouraged to meet with clients to connect with them. Last year, our team organised a joyous mani and bubbly evening for our clients, which was not only fun but also an experience that strengthens our relationship within the team and with the clients!"



Jessica Cheung
Associate
Dispute Resolution
CMS Hong Kong





Stories from our people:

Eugene Wong



The training and professional support has been instrumental to my development and allowed me to explore both my interests and strengths.

"I joined CMS in 2019 after attending the Hong Kong office's first summer internship program and heartily recommend the program as it provides valuable insight into the type of clients and cases which the firm regularly advises on.

During my time at the firm, I have been fortunate to work on a variety of matters for international clients of all shapes and sizes – from listed companies to start ups. The training and professional support has been instrumental to my development and allowed me

to explore both my interests and strengths. In terms of culture, my diverse and dynamic colleagues have fostered an open-door policy where I feel welcome to share my views.

In respect of CSR, the firm has been actively engaged in various initiatives both locally and internationally including contributions to the Médecins Sans Frontières cookbook, volunteering at the Crossroads Foundation and preparing food at Food Angel. In this regard, I have been pleasantly surprised by the firm's willingness to explore and support new initiatives."



Eugene Wong
Associate
Commercial / IP
CMS Hong Kong

Case study:

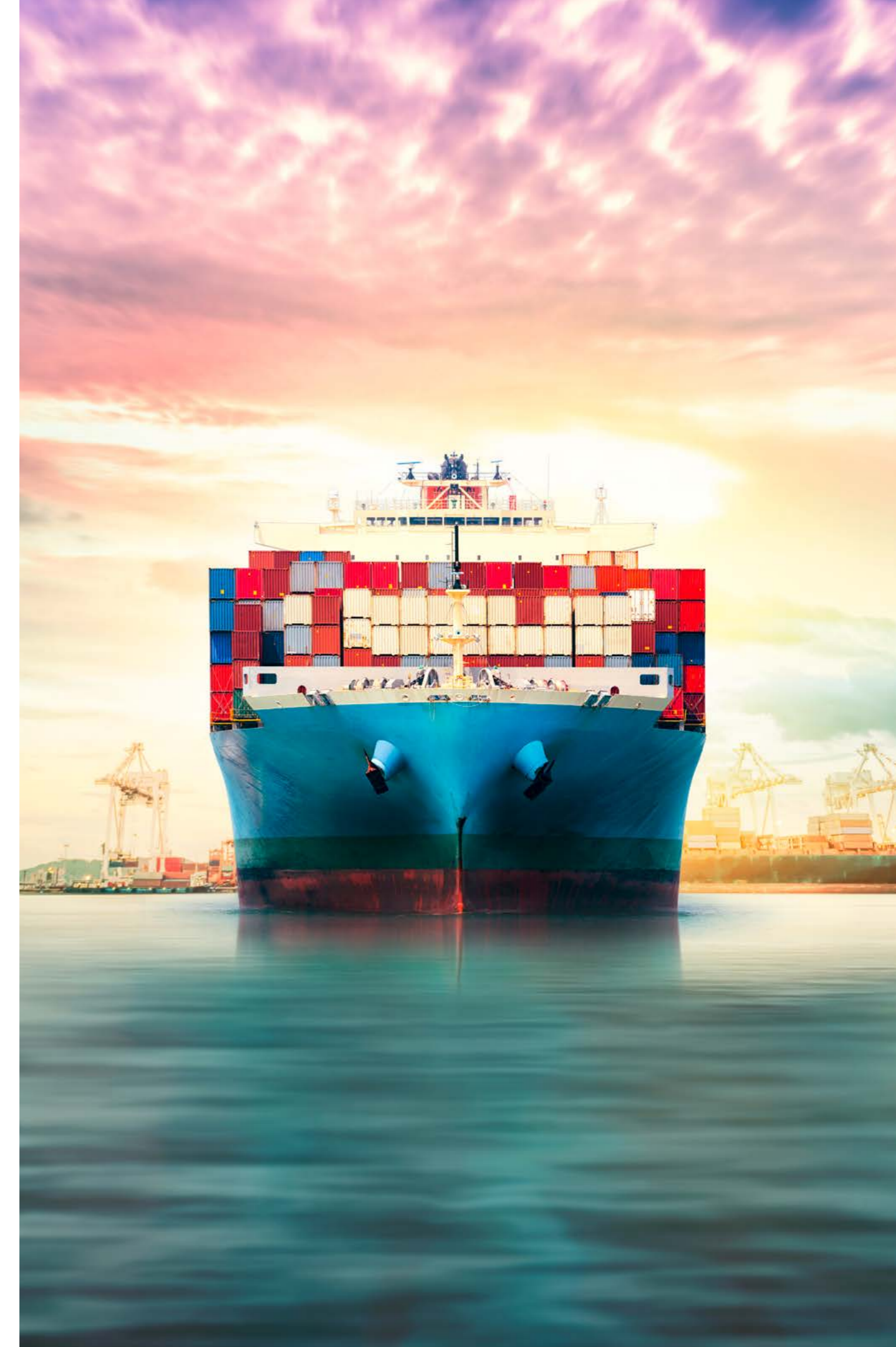
MV “MILANO BRIDGE”

MV “MILANO BRIDGE” is a container ship with gross tonnage in excess of 150,000 MT. On 6 April 2020, MV “MILANO BRIDGE” allided with the port operated by Pusan Newport Co., Ltd in Busan, South Korea, causing immediate damage to the port as well as the collapse of cranes at the port. There are a number of videos of the allision on the internet which shows the collapse of the cranes. The claim of Pusan Newport was estimated to be in excess of USD 100m for property damaged and business interruption due to the allision. We represented Pusan Newport.

Whilst a vessel can limit her liability pursuant to the Tonnage Convention, the limitation available to a vessel differs in each jurisdiction depending on the version of the Tonnage Convention applicable in the particular

jurisdiction. It is therefore very important for a claimant as to which court seize jurisdiction of the matter. There is a fine balance between forum shopping and serving justice given a claimant’s claim can be heavily limited simply because a particular jurisdiction has not rectified the latest version of the Tonnage Convention.

The work involved the arrest of a sistership of MV “MILANO BRIDGE” in Hong Kong, the negotiation of security, the collaboration with lawyers in Australia, Japan and South Korea and working with technical experts and forensic accountants on the allision as well as the claim amount. This showcases the type of work that the team regularly deals with, which often is cross-discipline and cross-border.





Case study:

Tsingshan Nickel Crisis

Tsingshan Group (the world's largest nickel metal producer) suffered heavy losses in its nickel trading, following a short squeeze in early March 2022. The media reported that "Tsingshan could have suffered well over USD 2bn of daily losses at the most extreme point of nickel's surge".

The crisis arose as a result of the Western sanctions against Russia. The price of nickel suddenly rose 500% in a single day, to above USD 100,000 per tonne on 8 March 2022. This prompted the London Metal Exchange (LME) to stop trading and cancel contracts to prevent a systemic meltdown. The media described this nickel crisis as 'unprecedented', 'never happened before in the history of the nickel market', 'the mother of all short squeezes'.

We advised Bank of China on the successful workout of the Tsingshan-LME nickel derivatives crisis with the dire special situation successfully being restructured within 6 months and resulting in the Bank of China suffering no losses.

The deal was named as one of the "Deals of the Year 2022" by China Business Law Journal.

CMS Law-Now™

Your free online legal information service.

A subscription service for legal articles on a variety of topics delivered by email.
[cms-lawnow.com](https://www.cms-lawnow.com)

The information held in this publication is for general purposes and guidance only and does not purport to constitute legal or professional advice.

CMS LTF Limited (CMS LTF) is a company limited by guarantee incorporated in England & Wales (no. 15367752) whose registered office is at Cannon Place, 78 Cannon Street, London EC4N 6AF United Kingdom. CMS LTF coordinates the CMS organisation of independent law firms. CMS LTF provides no client services. Such services are solely provided by CMS LTF's member firms in their respective jurisdictions. CMS LTF and each of its member firms are separate and legally distinct entities, and no such entity has any authority to bind any other. CMS LTF and each member firm are liable only for their own acts or omissions and not those of each other. The brand name "CMS" and the term "firm" are used to refer to some or all of the member firms or their offices; details can be found under "legal information" in the footer of [cms.law](https://www.cms.law).

CMS locations:

Aberdeen, Abu Dhabi, Amsterdam, Antwerp, Barcelona, Beijing, Belgrade, Bergen, Berlin, Bogotá, Bratislava, Brisbane, Bristol, Brussels, Bucharest, Budapest, Casablanca, Cologne, Cúcuta, Dubai, Dublin, Duesseldorf, Edinburgh, Frankfurt, Funchal, Geneva, Glasgow, Gothenburg, Hamburg, Hong Kong, Istanbul, Johannesburg, Kyiv, Leipzig, Lima, Lisbon, Liverpool, Ljubljana, London, Luanda, Luxembourg, Lyon, Madrid, Manchester, Maputo, Mexico City, Milan, Mombasa, Monaco, Munich, Muscat, Nairobi, Oslo, Paris, Podgorica, Poznan, Prague, Reading, Rio de Janeiro, Riyadh, Rome, Santiago de Chile, São Paulo, Sarajevo, Shanghai, Sheffield, Singapore, Skopje, Sofia, Stavanger, Stockholm, Strasbourg, Stuttgart, Tel Aviv, Tirana, Vienna, Warsaw, Zagreb and Zurich.

Further information can be found at [cms.law](https://www.cms.law)

CMS Hong Kong

APPLY NOW >



WeChat

CMS Careers

E talentacquisition@cms-cmno.com

